

BUILDING OUT THE BLUES

FLUTE / OBOE / VIOLIN

1

Bb MA7/F G7 Cm7 B9(#11)

5

9

13

2

Bb MA7/F G7 Cm7 B9(#11)

17

21

25

29

BUILDING OUT THE BLUES

3

BbMA57/F

G7

Cm7

B9(#11)

37

41

45

4

BbMA57/F

G7

Cm7

B9(#11)

49

53

57

61

5 $BbMaj7/F$ $G7$ $Cm7$ $B9(\#11)$

65 Bb

69 Eb $*Ab7$ $*Em7$ $*A7$ $*Fm7$ $*Bb7$

73 Eb $Eoim$ Bb/F $F\#oim$ $G7(\#9)$

77 F Eb $Bb7$ $G7$ $Cm7$ $F7$

Detailed description: The image shows a musical score for guitar, titled 'Building Out the Blues'. It consists of three staves of music in the key of B-flat major (two flats). The first staff begins with a box containing the number '5'. Above the first four measures of the first staff are the chords $BbMaj7/F$, $G7$, $Cm7$, and $B9(\#11)$. The first staff has a measure number '65' and a Bb chord. The second staff starts at measure 69 and contains chords Eb , $*Ab7$, $*Em7$, $*A7$, $*Fm7$, and $*Bb7$. The third staff starts at measure 73 and contains chords Eb , $Eoim$, Bb/F , $F\#oim$, and $G7(\#9)$. The fourth staff starts at measure 77 and contains chords F , Eb , $Bb7$, $G7$, $Cm7$, and $F7$. The notation includes various rhythmic patterns, such as eighth and sixteenth notes, and rests.

BUILDING OUT THE BLUES

ALTO / BARI SAX.

1

GMA7/D E7 AM7 G#9(#11)

5 9 13

2

GMA7/D E7 AM7 G#9(#11)

17 21 25 29

3

GMA57/D E7 AM7 G#9(#11)

35

37

41

45

4

GMA57/D E7 AM7 G#9(#11)

49

53

57

62

BUILDING OUT THE BLUES

HORN IN F

1 FMA7/C D7 Gm7 F#9(#11)

5 9 13

Detailed description: This system contains the first four staves of music. The first staff is a whole rest followed by a quarter note G4, quarter note F4, quarter note E4, and quarter note D4. The second staff begins with a first ending bracket and contains eighth notes: G4, F4, E4, D4, C4, B3, A3, G3, F3, E3, D3, C3, B2, A2, G2, F2, E2, D2. The third staff contains eighth notes: G4, F4, E4, D4, C4, B3, A3, G3, F3, E3, D3, C3, B2, A2, G2, F2, E2, D2. The fourth staff contains eighth notes: G4, F4, E4, D4, C4, B3, A3, G3, F3, E3, D3, C3, B2, A2, G2, F2, E2, D2. Chord symbols are placed below the staves: F, F, F, F, Bb, Bb, F, F, C, C, F, F.

2 FMA7/C D7 Gm7 F#9(#11)

17 21 25 29

Detailed description: This system contains the next four staves of music. The first staff is a whole rest followed by a quarter note G4, quarter note F4, quarter note E4, and quarter note D4. The second staff begins with a first ending bracket and contains eighth notes: G4, F4, E4, D4, C4, B3, A3, G3, F3, E3, D3, C3, B2, A2, G2, F2, E2, D2. The third staff contains eighth notes: G4, F4, E4, D4, C4, B3, A3, G3, F3, E3, D3, C3, B2, A2, G2, F2, E2, D2. The fourth staff contains eighth notes: G4, F4, E4, D4, C4, B3, A3, G3, F3, E3, D3, C3, B2, A2, G2, F2, E2, D2. Chord symbols are placed below the staves: F, *Bb, F, F, Bb, Bb, F, F, C, *Bb, F, F.

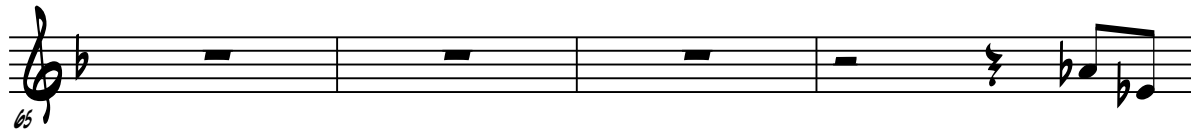
5

FMA^b7/C

D7

G M7

F#9(#11)



F

B^b

*E^b7

*B M7

*E7

*C M7

F7



B^b

B oim

F/C

C#oim

D7(#9)



C

B^b

F7

D7

G M7

C7



BUILDING OUT THE BLUES

B♭ TRUMPET / CLARINET / TENOR SAX

1 C MA7/G A7 D M7 C#9(#11)

5

9

13

2 C MA7/G A7 D M7 C#9(#11)

17

21

25

29

3 CMA7/G A7 DM7 C#9(#11)

33

37

41

45

4 CMA7/G A7 DM7 C#9(#11)

49

53

57

61

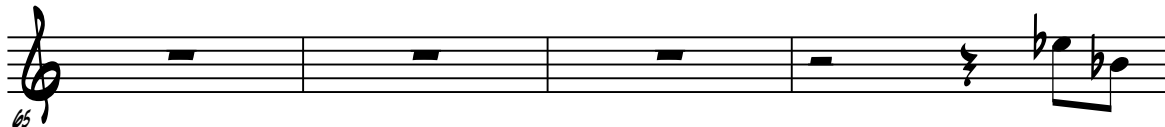
5

CMA57/G

A7

DM7

C#9(#11)



C

F

*Bb7

*F#M7

*B7

*Gm7

*C7



F

F#DIM

C/G

G#DIM

A7(#9)



G

F

C7

A7

DM7

G7



BUILDING OUT THE BLUES

TROMBONE / BARITONE / CELLO / TUBA

1

B^bMAS7/F

G7

C^M7

B9(#11)

Musical notation for the first system (measures 1-16). The key signature is B-flat major (two flats). The time signature is common time (C). The notation consists of four staves. The first staff shows rests for measures 1-4, followed by a chordal entry in measure 5. The second staff contains a melodic line starting in measure 5, with chord symbols B^b above and E^b below. The third staff continues the melodic line with chord symbols F and B^b above and F below. The fourth staff concludes the system with a double bar line and repeat sign, with chord symbols B^b above and B^b below.

2

B^bMAS7/F

G7

C^M7

B9(#11)

Musical notation for the second system (measures 17-32). The key signature is B-flat major (two flats). The time signature is common time (C). The notation consists of four staves. The first staff shows rests for measures 17-20, followed by a chordal entry in measure 21. The second staff contains a melodic line starting in measure 21, with chord symbols B^b above and E^b below. The third staff continues the melodic line with chord symbols F and B^b above and F below. The fourth staff concludes the system with a double bar line and repeat sign, with chord symbols B^b above and B^b below. A note marked with an asterisk (*) is present in measures 21 and 25.

3

BbMA7/F G7 Cm7 B9(#11)

37
39
41
45

4

BbMA7/F G7 Cm7 B9(#11)

49
53
57
61

5

B^bMaj7/F

G7

C^M7

B9(#11)

65

B^b

E^b

*A^b7

*E^M7

*A7

*F^M7

*B^b7

69

E^b

E^oDim

B^b/F

F[#]Dim

G7(#9)

73

F

E^b

B^b7

G7

C^M7

F7

77

3

BbMA7/F

G7

Cm7

B9(#11)

35

37

41

45

4

BbMA7/F

G7

Cm7

B9(#11)

49

53

57

61

5

BbMA7/F

G7

Cm7

B9(#11)

65

Bb

Eb

*Ab7

*Em7

*A7

*Fm7

*Bb7

69

Eb

Eoim

Bb/F

F#oim

G7(#9)

73

F

Eb

Bb7

G7

Cm7

F7

77