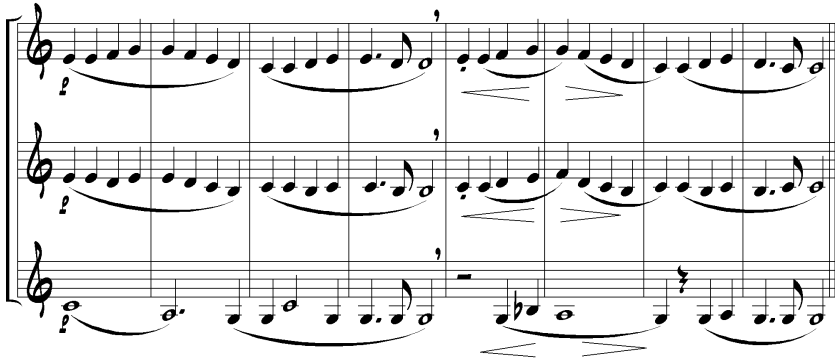


The student will be asked to play a 3-part chorale piece, in ensemble with other students, such as the following example. The music will be set in an appropriate range for each instrument. The student will be expected to play all three parts.



Relevant knowledge

The student should have an understanding of melody versus harmony. The student should be familiar with the most common articulations and dynamics, and be able to observe them.

Entry Standards - Journeyman

Age / Experience

Journeyman are typically high school aged. They will be accomplished on their instrument, confident in their ability to perform most school band music, up to level 4 on the 7-point scale.

Instruments

Journeyman may play any band instrument. Journeyman often study multiple instruments and are able to mentor younger students on several instruments.

Audition requirements

Entry to the Journeyman program is at the recommendation of mentors, who will be very familiar with the student's abilities. There may not be a formal audition. However, the student will have distinguished himself or herself by demonstrating skills in sectional rehearsals or in solo opportunities.

The student is expected to play major and minor scales in all keys using written music. The student is expected to accurately sight-read music of intermediate difficulty. Considering that Journeyman perform in adult ensembles, the Journeyman must understand musical roadmaps and follow music without losing one's place.

Relevant knowledge

Mentors look for a level of musical maturity from Journeyman candidates. Students should be able to apply appropriate music style for the most common idioms such as rock, swing, Latin, marches, rags and waltzes.



Program Standards 2009-2010

phillipsguild.org

